



ROYAL MELBOURNE HOTEL
◊ ATRIUM ◊ CELLS ◊ GOVERNORS LOUNGE ◊ FUNCTIONS LOUNGE ◊ COURTYARD ◊

VENUE SPECIFICATIONS

The Royal Melbourne Hotel (formally known as the Palladin) is Melbourne's most unique entertainment and function establishment. Housed in a heritage listed building incorporating a Bluestone Cell block, a Glass Atrium in between, Boutique Nightclub Upstairs and plush Lounge up the front, it has since been refurbished and transformed to provide the perfect place for all events large and small.

It offers 4 separate areas from which to choose from accommodating events and functions from 100 to 1200 guests.

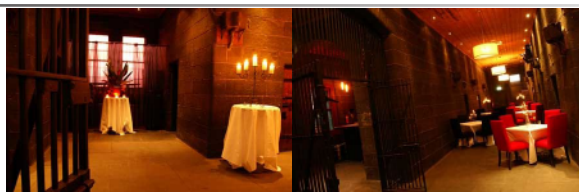
ATRIUM

Spectacular glass enclosure with direct access to outdoor Courtyard 800 pax.



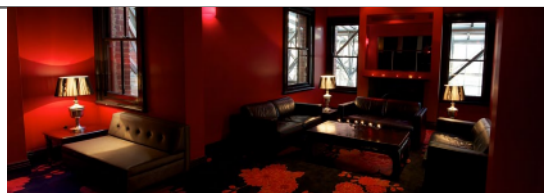
THE CELLS

Featuring bluestone long corridors and private Warden's Room 120 pax.



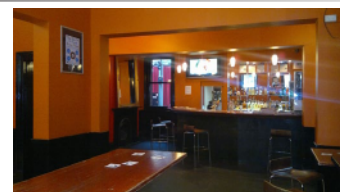
HERITAGE

Upstairs boutique nightclub inclusive of 2 bars, DJ facilities, dance floor and a sunken chill-lounge 250 pax.



THE GOV'S LOUNGE

100 pax perfect for the intimate event.



All areas feature fully equipped dj/live act set up, EV sound, Intelligent lighting rigs, plasmas, long throw projectors, comfy couches and more. All areas feature separate entrances if required and are individually sound contained. The Royal Melbourne is perfectly located between King and Spencer Street, Melbourne CBD – with all modes of transport within close proximity, tram stop at the doorstep and less than a 5 minute walk to Southern Cross Station.

Having designed events/festivals/club nights for 20 years I speak your language in terms of what you desire when running your events . I can also assist you in event design, production and promotions all tailored to your needs.

Please contact me on **03 9629 2400** or e-mail info@rmh.com.au if you have any further queries or wish to view the venue.

